

# Board of Trustees Voting: Information and CV Booklet

Employee, Individual and  
Continuation / Retired / Widowed  
Member Representatives



**bestMed**

personally yours



# Contents

---



<b>1. Board of Trustees election progress map</b>	<b>3</b>
<b>2. Voting instructions and procedures</b>	<b>4</b>
<b>3. Voting methods</b>	
Voting method: How to vote using the PwC Online Voting Platform	5
Problems while voting via the PwC Online Voting Platform	6
<b>4. Dispute handling</b>	<b>6</b>
<b>5. BoT Employee Representative candidate list with a summary of CVs</b>	<b>8</b>
<b>6. BoT Individual Representative candidate list with a summary of CVs</b>	<b>10</b>
<b>7. BoT Continuation / Retired / Widowed Representative candidate list with a summary of CVs</b>	<b>11</b>

# 1. Board of Trustees (BoT) election progress map

Start of  
BoT election  
process

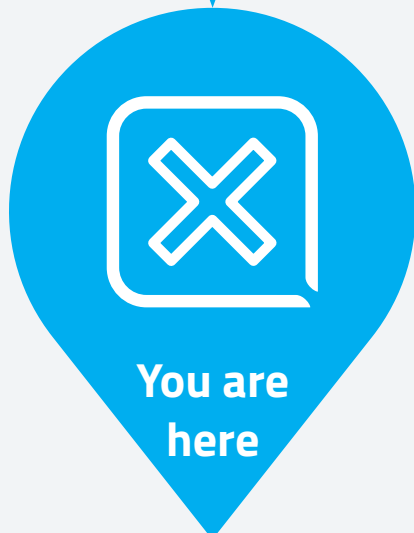


Notice and request

for candidate  
nominations



Vetting  
of candidates



You are  
here

Voting



Vote count and  
finalisation  
of preliminary  
election results



Announcement  
of final election  
results

## 2. Voting instructions and procedures

- 2.1 Only principal members in good standing may participate in the electoral process and vote as indicated herein.
- 2.2 In terms of the Rules, each principal member is entitled to cast **one (1)** vote in the Employee Member Representatives category, **one (1)** vote for a candidate in the Individual Member Representatives category and **one (1)** vote for a candidate in the Continuation / Retired / Widowed Member Representatives category. Following the vetting process that took place, the Continuation / Retired / Widowed Member Representatives category has **one (1)** candidate that stands uncontested. In terms of the requirements of Scheme Rule 18.3.3, this candidate shall be declared as duly elected at the upcoming Annual General Meeting. Thus, each member has **two (2)** votes in total, i.e., **one (1)** vote in the Employee Member Representatives category and **one (1)** vote for a candidate in the Individual Member Representatives category.
- 2.3 Voting for more than **two (2)** candidates, and for more than one (1) candidate per Member Representative category, will render the entire Ballot Paper / Form invalid.
- 2.4 Voting in respect of the election of members to the Board of Trustees **will open on Friday, 9 January 2026 at 12:00 and close on Monday, 9 February 2026 at 16:00.**
- 2.5 Members are afforded the opportunity to vote by using the method below:
- Voting method: **Online voting.**
- 2.6 PricewaterhouseCoopers Incorporated ("PwC") has been appointed as the Independent Electoral Body ("IEB") in respect of the following electoral processes:
- the call for trustee nominations,
  - receiving and vetting of nominations received from members, and
  - overseeing the election processes.
- 2.7 In determining the validity of any submitted Ballot Papers / Forms and in determining the election outcome, any decisions made by the IEB shall be final and binding.
- 2.8 Any election-related queries must be directed to the IEB on **012 429 0505** or email: **[za\\_bestmedelection2026@pwc.com](mailto:za_bestmedelection2026@pwc.com)**. The IEB will be the only party that will respond to any queries related to the electoral processes.
- 2.9 The abovementioned IEB telephone and email contact details will only be operational between 08:00 and 16:30, Mondays to Fridays, excluding weekends and public holidays.

### 3. Voting method

- 3.1 Voting opens Friday, 9 January 2026 at 12:00 and closes on Monday, 9 February 2026 at 16:00. The voting method applicable is indicated below.

#### VOTING METHOD: HOW TO VOTE USING THE PwC ONLINE VOTING PLATFORM

- 3.2 Members will receive their voting pack via email. The voting pack consists of the following documents:
- a cover letter which includes a link to the PwC Online Voting Platform and a link to a video demonstrating how to vote using the PwC Online Voting Platform
  - voting information / instructions and Trustees Election Candidate List, including a summary of their CV as submitted by the candidates

Members must contact Bestmed to ensure that their contact details are up to date..

- 3.3 To access the PwC Online Voting Platform, click on the link provided via email, enter your email address that is on Bestmed's records and click on 'Login'.
- 3.4 Members who previously activated their accounts and voted in the 2022 and 2024 Bestmed Trustee elections will be able to navigate to the site and log in using the credentials they've previously created and used.
- 3.5 Members who have not previously voted using the PwC Online Voting Platform will receive an email from PwC on your email address that is on Bestmed's records, to activate your account on the PwC Online Voting Platform. During the

activation process, you will be asked to create a password and then to confirm your mobile number on Bestmed's records. You will then be prompted to enter a one-time pin that you will receive on your confirmed mobile number.

- 3.6 Once you have received confirmation of your account activation, return to the PwC Online Voting Platform, and click on 'Login' again.
- 3.7 Once logged in, using your email address that is on Bestmed's records and your password, click on "Bestmed election" to start the voting process. Voting instructions will appear on the screen along with your details (name, surname, membership number, etc.) for confirmation. Click on "Yes" to confirm your details and continue to the voting screen.
- 3.8 The voting screen will appear, showing a list of candidates' names arranged in alphabetical order (by surname) per Member Representative category with their respective photos. You will be able to access the abridged / summary of the Curriculum Vitae ("CV") of each candidate by clicking on a button next to the candidate's photo.
- 3.9 You are entitled to cast **one (1)** vote in the Employee Member Representatives category and **one (1)** vote for a candidate in the Individual Member Representatives category; a total of **two (2)** votes, since the candidate in the Continuation / Retired / Widowed Member Representatives category stands uncontested and will be declared as duly elected at the upcoming Annual General Meeting in terms of the requirements of Scheme Rule 18.3.3. You cannot vote for more than **one (1)** candidate in each Member Representative category.
- 3.10 You can abstain from voting in any or in all of the Membership Representative categories by clicking "Select Vote" without ticking on any boxes next to each candidate.
- 3.11 After you have made your selection of a maximum of two (2) candidates, a summary of your selected candidates will appear. You can change the votes or select "Submit", to submit your votes to the PwC Online Voting Platform. Once submitted, your votes are final and you will not be able to log in again.

- 3.12 Your votes will only be considered final once you receive the confirmation “Your vote(s) were successfully added.”

**Important:** Once you click “Submit” to confirm your selection, your vote will be submitted and will thus be irrevocable. Members may only vote in a one-time event. Meaning you cannot go back to vote, or edit your voting selection, once you have confirmed and successfully submitted your vote. You will not be able to log in on the PwC Online Voting Platform once your vote has successfully been submitted.

## PROBLEMS WHILE VOTING VIA THE PWC ONLINE VOTING PLATFORM

- 3.13 Please contact the IEB where you experience any problems using the PwC Online Voting Platform or if you have any election-related queries on **012 429 0505** or by email at **[za\\_bestmedelection2026@pwc.com](mailto:za_bestmedelection2026@pwc.com)**.

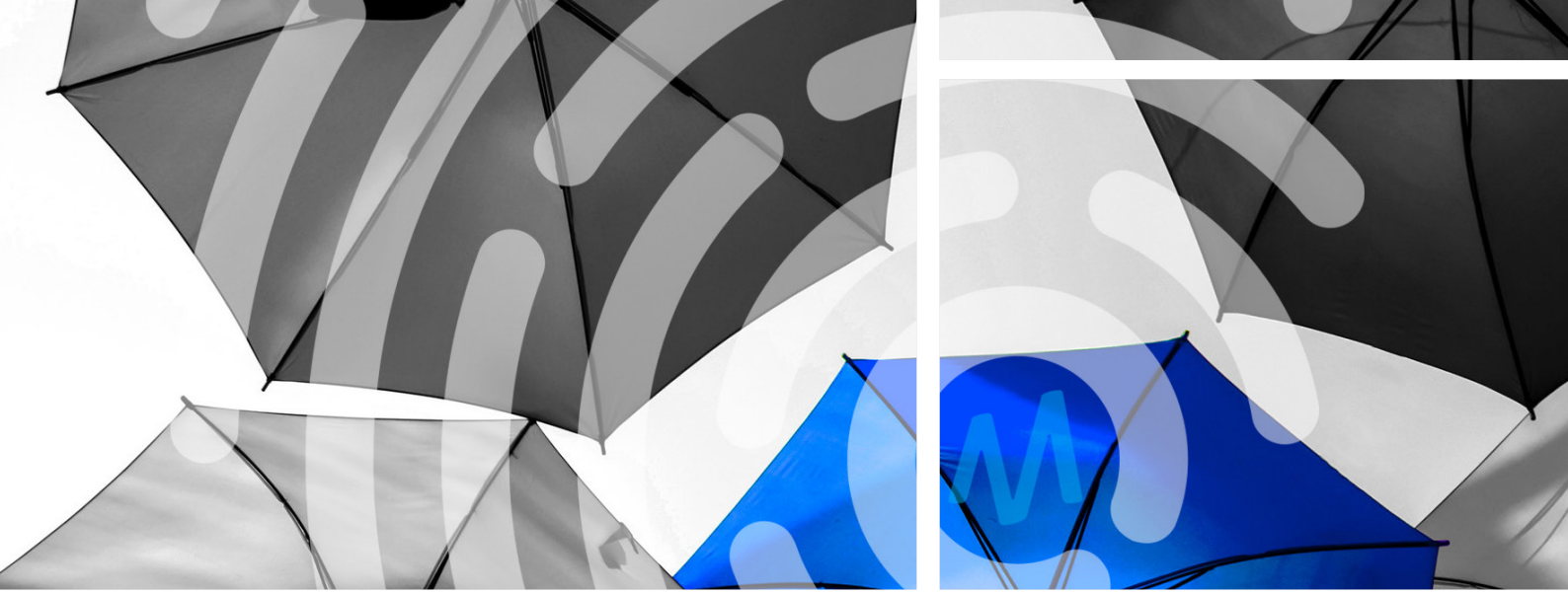
The IEB will be the only party that will respond to any queries related to the electoral processes.

- 3.14 The abovementioned IEB telephone and email contact details will only be operational between 08:00 and 16:30, Mondays to Fridays, excluding weekends and public holidays.

## 4. Dispute handling

- 4.1 It is prescribed in Bestmed Rule 18.3.5 that the number of candidates for which there are vacancies in each Member Representatives category and who receive the majority vote in this manner, shall be declared duly elected at the Annual General Meeting subject to the provisions of Scheme Rules 18.1.3 and 18.2.5, provided that in the event of an equal number of votes for candidates in the same group, a rerun of the election for that particular vacancy shall take place.
- 4.2 The announcement of the newly elected Board of Trustees representatives will be made at the upcoming Bestmed Annual General Meeting.
- 4.3 In terms of Rule 18.3.8, should any member dispute the outcome of the election, such a dispute must be referred to the Principal Officer within five (5) days following the formal announcement of the outcome. The Principal Officer, after consultation with the Board, shall advise the Member of the Scheme’s decision within seven (7) days following the dispute. Should the Member not be satisfied with the outcome and the decision of the Scheme, the Member may approach the Council for Medical Schemes for appropriate relief.





# Candidate

---

# CV's

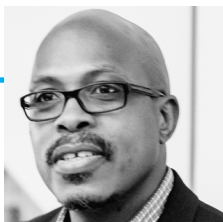


## EMPLOYEE MEMBER REPRESENTATIVES

### 5. BoT Employee Representative candidate list with a summary of CVs

**Please note:** You may only vote for **one (1)** candidate in this Member Representative category. Candidates' abridged CVs, as received from the nominated candidates, are included below. Voting is done on the ballot form.

1.



**Full Names:** Prof. Majola, Brian Kwazi

Prof. Majola is an Associate Professor in the Department of Business Management, University of Limpopo. He holds an MSc in Human Resource Management (University of Manchester), MCom (Industrial Relations), and PhD in HRM. Over 20 years experience spanning private and public sectors, he led labour relations, representing employers at the CCMA, ELRC, SSSBC, GPSSBC, and chaired disciplinary hearings. In academia, he serves on the School Board, the editorial board, etc. A recipient of Ford Foundation, and Canadian Commonwealth bursaries, and an NRF C2-rated researcher. He is a SABPP (Master HR Practitioner) and member of the UL Research Ethics Committee.

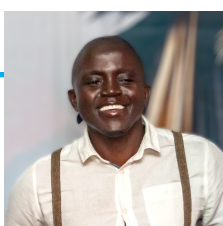
2.



**Full Names:** Mr Mnisi, Themba Azaniah

Themba Azaniah Mnisi holds a Postgraduate Diploma in Risk Management and is a Masters candidate in Criminology and Social Policy. With over 15 years in Audit, Risk and Compliance, he is a highly skilled expert in his field. He is a regular media commentator on crime and security and served as the Director for Security on the Blue Valley Homeowners Association Board from 2021 to 2022.

3.



**Full Names:** Mr Netshisaulu, Fhumulani Michael

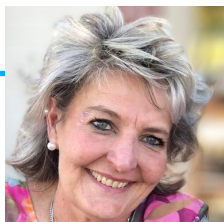
Fhumulani Netshisaulu is a registered Professional Engineering Technologist (ECSA) with an MBA and over 11 years of experience at Transnet. He currently serves on the Port Executive Committee as Acting New Business Development Manager, where he drives strategic growth, port management and stakeholder engagement. Beyond his professional career, Fhumulani is a health advocate. Since 2024, he has run an awareness campaign for kidney disease, organ donation and chronic illness wellness, after surgery left him with one kidney. His professional expertise in business management and governance, combined with lived healthcare advocacy, makes him a strong candidate for the role.



## EMPLOYEE MEMBER REPRESENTATIVES (continued)

**Please note:** You may only vote for **one (1)** candidate in this Member Representative category. Candidates' abridged CVs, as received from the nominated candidates, are included below. Voting is done on the ballot form.

4.



**Full Names:** Prof. Slabbert, Magdalena

Prof. Slabbert has the following qualifications: BA, Hons B Journalism, HED, B Proc, LLB, LLD (medical law). She is a full professor at the University of South Africa (Unisa). As an academic for the past twenty years, she has published numerous articles in accredited journals in the field of medical law. An advocate of the High Court of South Africa and an accredited mediator. She is a founder member of SATiBA (South African Tissue Bank Association) and has been the chairperson of SAMLA (South African Medico-legal Association) for three years. She is currently an elected trustee of Bestmed Medical Scheme.

5.



**Full Names:** Rev. van Niekerk, Wynand

Wynand van Niekerk is a Chief Executive Officer and ordained minister with extensive experience in leadership within the faith-based and non-profit sectors. He brings proven strengths in governance, strategic planning and visionary leadership. He has a track record in managing complex organisations and ensuring financial sustainability. His career reflects a commitment to advancing community well-being through church-based initiatives, social services and healthcare. He has served as a minister in the Dutch Reformed Church (2011–2025), as Managing Director (2015–2019) and is currently Chief Executive Officer (2025–present).

## INDIVIDUAL MEMBER REPRESENTATIVES

**Please note:** You may only vote for **one (1)** candidate in this Member Representative category. Candidates' abridged CVs, as received from the nominated candidates, are included below. Voting is done on the ballot form.

### 6. BoT Individual Representative candidate list with a summary of CVs

1.



**Full Names:** Ms Coetsee, Melani

Ms Coetsee is a B. Comm (Accounting) graduate with over 27 years' working experience, appointed in various Executive Management positions, including as a Medical Scheme Board of Trustees member. 20 years' experience in the medical aid administration industry responsible for Membership to Financial Management. Current owner of an Executive Management consulting company founded in 2012. Resilient, self-driven and self-reliant, setting aims and targets and leads by example, through a collaborative approach with good interpersonal skills to engage, motivate and encourage others through change. Highly focused with attention to detail and a proven track record of successfully delivering on expectations.

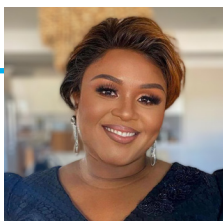
2.



**Full Names:** Dr Gani, Haseena

Dr Haseena is a registered medical practitioner (HPCSA & GMC) with postgraduate qualifications in obstetrics and business. Her local and international experience as a healthcare practitioner and pharmaceutical physician has immersed her in various healthcare systems for over 20 years. We believe that Dr Haseena's corporate governance and leadership experience (previously CEO of the Marketing Code Authority), together with her keen interest in healthcare funding and pharmaco-economics (previously clinical expert for the Council for Medical Schemes' Prescribed Minimum Benefit review process) would be advantageous to further the interests of the Scheme and its membership.

3.



**Full Names:** Ms Mntambo, Siduduzekile Nompumelelo

Ms Mntambo is a seasoned attorney with 16 years of post-admission experience and has been the Managing Director of Siyaya Attorneys Inc. since 2010. She has a strong background in leadership, communication, negotiation and strategic planning. Her legal work includes advising state-owned entities and private clients on regulatory compliance, dispute resolution, HR policies and disciplinary procedures. She is deeply committed to justice, ethics and integrity. Beyond legal practice, she serves on panels and committees for various entities, contributing to good governance, transparency and accountability. Her career reflects a commitment to excellence, transformation and the mentorship of future legal professionals.

## CONTINUATION / RETIRED / WIDOWED MEMBER REPRESENTATIVES

**Please note:** Following the vetting process, only **one (1)** candidate remains in this category, therefore, no voting is required for this category. In terms of Scheme Rule 18.3.3, this candidate shall be declared as duly elected at the upcoming Annual General Meeting. The candidate's abridged CV, as received from the nominated candidate, is included below.

### 7. BoT Continuation / Retired / Widowed Representative candidate list with a summary of CVs

1.



**Full Names:** Prof. Crewe, Robin Michael

Prof. Robin Crewe was born in Johannesburg, studied at Natal University and University of Georgia, U.S.A. From 1986 to 1996, he was the Director of the Communication Biology Research Group at the University of the Witwatersrand. He established the Social Insects Research Group at the University of Pretoria. He was Dean of Natural and Agricultural Sciences (1997 to 2003) and a Vice-principal of the University of Pretoria from 2003 to 2013. In 2019, he won the National Science and Technology Forum-South32 Award for his contribution to science over a lifetime. He has served on the boards of six companies.

# Please remember

- Voting opens on **Friday, 9 January 2026 at 12:00** and close on **Monday, 9 February 2026 at 16:00**.
- Any election-related queries must be directed to the IEB on 012 429 0505 or email: [za\\_bestmedelection2026@pwc.com](mailto:za_bestmedelection2026@pwc.com).
- The IEB will be the only party that will respond to any queries related to the electoral processes. The IEB telephone and email contact details will only be operational between **08:00 and 16:30, Mondays to Fridays, excluding weekends and public holidays**.

**Disclaimer:** Any election-related queries must be directed to the Independent Electoral Body ("IEB"), PricewaterhouseCoopers Incorporated ("PwC"), on **012 429 0505** or email: [za\\_bestmedelection2026@pwc.com](mailto:za_bestmedelection2026@pwc.com). The IEB will be the only party that will respond to any queries related to the electoral processes.

©Bestmed Medical Scheme  
Bestmed is a registered medical scheme (Reg. no. 1252) and an Authorised Financial Services Provider.  
(FSP no. 44058). [www.bestmed.co.za](http://www.bestmed.co.za)

**bestMed**  
personally yours