

# 2026

## Contraceptive List



**bestMed**  
personally yours

## Contraceptives

Contraceptives are available for female beneficiaries between the age of 10 and 60 years on all Bestmed options. The quantity and frequency depend on the product up to the maximum allowed amount.

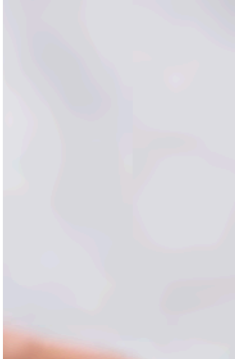
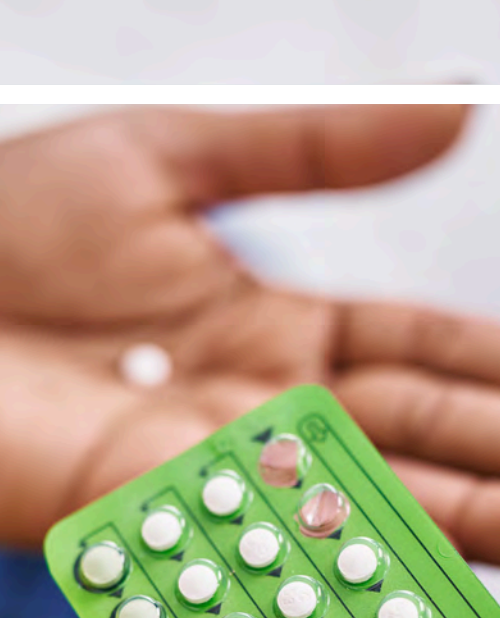
### Benefits are subject to the following:

- Mediscor Reference Price (MRP)  
MRP is a reference pricing model applicable to all medicines with generic equivalents or biosimilars. MRP sets a maximum reimbursable price for a list of generically similar or biosimilar products with a cost lower than that of the original medicine. If a beneficiary opts to use a medicine that is more expensive than the MRP, the beneficiary will have to pay the difference between the price of the chosen medicine and that of MRP.
- This list is subject to change without notice.

### ORAL CONTRACEPTIVE TABLETS (ONE CLAIM EVERY 24 DAYS)

NAME	NAPPI CODE	NAME	NAPPI CODE
Actordene tabs	3005867001	Medilevo 1.5mg tabs	3000062001
Biphasil tab	825808006	Medinor 1.5mg tabs	3000741001
Carmadene tabs	3005872001	Melodene tabs	842893008
Contrez tabs	3007984001	Mercilon tabs	825972019
Contrezin tabs	3007983001	Merdeza tabs	3006185001
Desimar tabs	3005921001	Microval tabs	826006019
Diane-35 tabs	825859018	Minerva tabs	897311004
Diva-35 tabs	707875001	Minesse tabs	879576006
Drasira tabs	3005920001	Minulette tabs	826014003
Drovelis tabs	3008836001	Mirelle tabs	880418001
Dyolafem tabs	3007504001	Nessifem tabs	3005891001
Ekuvor 1.5mg tabs	3005437001	Nordette tabs	826030009
Ella 30mg tabs	3002636001	Nordiol tabs	826049001
Eloine tabs	3001962001	Norlevo tabs	880612002
Ermaft 0.75mg tabs	3004529001	Novynette tabs	723085001
Ermaft 1.5mg tabs	3004530001	Ocaz tabs	3007415001
Escapelle 1.5mg tabs	710109001	Oralcon tabs	720419001
Esdopil 3/0.03mg tabs	3008296001	Ovral tab	826138004
Estelo 1.5mg tabs	3007553001	Plan B 0.75mg tabs	721167001
Ethodros tabs	3010233001	Qlaira tabs	716676001
Famynor tabs	720417001	Rubaz tabs	3006169001
Femilevo 1.5mg tabs	3006780001	Ruby tabs	716207001
Femodene ed tabs	825905001	Trigestrel tabs	720420001
Ginette tabs	897214005	Triphasil tabs	825832004
Hy-an 30mcg tabs	720418001	Vonel 0.75mg tabs	723165001
Jarina tabs	3001904001	Yade tabs	723652001
Levette tabs	721606001	Yasmin plus tabs	723736001
Levonorgestrel Unicorn 1.5mg tab	3010917001	Yasmin tabs	700089001
Lexilev tabs	3007262001	Yaz plus tabs	723730001
Leyla tabs	3005428001	Yaz tabs	712856001
Logynon ed tabs	825956005	Ynez tabs	3001912001
Lornestin 1.5mg tabs	3009959001	Zoely 2.5mg/1.5mg tabs	720904001
Marvelon tabs	825964008		
Maya tabs	723653001		

<b>TRANSDERMAL (ONE CLAIM EVERY 28 DAYS)</b>	<b>NAPPI CODE</b>
Evra patches	704091001
<b>VAGINAL RING (ONE CLAIM EVERY 28 DAYS)</b>	<b>NAPPI CODE</b>
Nuvaring vaginal ring	715533001
<b>INJECTABLES (ONE CLAIM EVERY 60 DAYS)</b>	<b>NAPPI CODE</b>
Nur-isterate 200mg/ml inj	748552006
<b>INJECTABLES (ONE CLAIM EVERY 90 DAYS)</b>	<b>NAPPI CODE</b>
Depo-provera 150mg/ml 1ml vial	718440005
Mytricon 150mg/ml susp for inj	3005353001
Petogen FSK 150mg/ml 1ml vial	780642007
<b>IMPLANTABLE (ONE CLAIM EVERY 36 MONTHS)</b>	<b>NAPPI CODE</b>
Implanon nxt implant (Limited to 1 device every 3 years)	718619001
<b>INTRA-UTERINE DEVICE (ONE CLAIM EVERY 60 MONTHS)</b>	<b>NAPPI CODE</b>
Avibela 52mg IUD	3010214001
Ball intra-uterine contraceptive device	277898001
Contraceptive device intra-uterine	191107001
Contraceptive device with copper	1015109001
Copper-t premium pack	600290001
Copper-t 380A	438254006
Dalcept c contraceptive device	664354007
Device contraceptive cu.375	527056002
Device cuprocept ccl	549612003
Intra-uterine contraceptive	152454001
Intra-uterine copper device cu	137456002
Intra-uterine device copper t	1053532001
Intra-uterine device cu375	131904001
Intra-uterine copper contraceptive	1009992001
Intra-uterine device postpartum	1163203001
Intra-uterine iud copper Yanae	1123992001
Kyleena 19.5mg iud	3000026001
Mirena kit	852252005
Nova T 380 iud	530671003



#### **PMB**

Tel: 086 000 2378  
Email: [pmb@bestmed.co.za](mailto:pmb@bestmed.co.za)

#### **INTERNATIONAL MEDICAL TRAVEL INSURANCE (AZOZA, PREVIOUSLY EUROP ASSISTANCE)**

Tel: 0861 838 333  
Claims and emergencies: [assist@azoza.co.za](mailto:assist@azoza.co.za)  
Travel registrations: [bestmed-assist@linkham.com](mailto:bestmed-assist@linkham.com)

#### **COMPLAINTS**

Tel: +27 (0)86 000 2378  
Email: [escalations@bestmed.co.za](mailto:escalations@bestmed.co.za) or  
(Subject box: Manager, escalated query)  
Postal address:  
PO Box 2297,  
Pretoria, Gauteng, 0001

#### **CMS ESCALATIONS**

Should an issue remain unresolved with the Scheme, members can escalate to the Council for Medical Schemes (CMS) Registrar's office:

Fax Complaints: 086 673 2466.

Email Complaints: [complaints@medicalschemes.co.za](mailto:complaints@medicalschemes.co.za)

Postal Address:  
Private Bag X34, Hatfield, 0028

Physical Address:  
Block A, Eco Glades 2 Office Park, 420 Witch-Hazel Avenue,  
Eco Park, Centurion, 0157

#### **BESTMED ETHICS AND FRAUD HOTLINE, OPERATED BY ADVANCE CALL**

Should you be aware of any fraudulent, corrupt or unethical practices involving Bestmed, members, service providers or employees, please report this anonymously to Advance Call.

<b>Hotline:</b>	0800 111 627
<b>WhatsApp:</b>	0860 004 004
<b>SMS:</b>	48691
<b>Hotmail:</b>	<a href="mailto:bestmed@behonest.co.za">bestmed@behonest.co.za</a>
<b>Free post:</b>	BNT165, Brooklyn Square, 0075
<b>Website &amp; chat:</b>	<a href="http://www.behonest.co.za">www.behonest.co.za</a>

#### **HOSPITAL AUTHORISATION**

Tel: 080 022 0106  
Email: [authorisations@bestmed.co.za](mailto:authorisations@bestmed.co.za)

#### **CHRONIC MEDICINE**

Tel: 086 000 2378  
Email: [medicine@bestmed.co.za](mailto:medicine@bestmed.co.za)

#### **CLAIMS**

Tel: 086 000 2378  
Email: [service@bestmed.co.za](mailto:service@bestmed.co.za) (queries)  
[claims@bestmed.co.za](mailto:claims@bestmed.co.za) (claim submissions)

#### **MATERNITY CARE**

Tel: 012 472 6797  
Email: [maternity@bestmed.co.za](mailto:maternity@bestmed.co.za)

#### **WALK-IN FACILITY**

Block A, Glenfield Office Park,  
361 Oberon Avenue, Faerie Glen,  
Pretoria, 0081, South Africa

#### **POSTAL ADDRESS**

PO Box 2297, Arcadia,  
Pretoria, 0001, South Africa

#### **NETCARE 911**

Tel: 082 911  
Email: [customer.service@netcare.co.za](mailto:customer.service@netcare.co.za) (queries)

 **086 000 2378**

 **[service@bestmed.co.za](mailto:service@bestmed.co.za)**

 **068 376 7212**

 **[www.bestmed.co.za](http://www.bestmed.co.za)**

 **Bestmed Medical Scheme**

 **Bestmed Medical Scheme**